



Kishwaukee Chronicle

NOVEMBER 7, 2022

Guest Fee Reminder

*All members are reminded that the **\$10.00** guest fee applies to the Outdoor Range and Outdoor practice targets as well as the Indoor Range. If you bring guest, please sign them in and pay in the guest fee box located in the Indoor Range*

Note from the Editor.

Hunting season is in full swing! Send me your harvest pictures, and I will share them in the newsletter.

Nominations are in. The whole board got nominated. Join us next month for the elections.

Check out the event for new shooters/members to learn some great information. Sunday Dec 18th. See details below.

Dan Kollins

A message from David Zern:

A message was recently left on the club whiteboard asking if our first aid box in the clubhouse had been gone through recently, and if any updates needed to be made. I looked through it and replaced any expired/unusable medications and equipment.

Since we're all dealing with pointy objects, and chainsaws and heavy equipment are regularly used on the property, I figured some first aid gear for more urgent situations might be useful. I've put together a separate kit which is now hanging on a hook on the front of the main box. This will allow the small kit to go to the person in need, rather than someone having to gather up the main kit's contents. The kit is a small black case that contains a tourniquet, an emergency trauma dressing, a splint, trauma shears, various gauze, and a few other items. Listed on the front of the kit is the club's address, which can be given to 911 should it be called. As a public service announcement, in the age of the cell phone, always begin a 911 call with the address/location.

Instructions for the use of the tourniquet are included in the kit, and I've included an attached image. For anyone curious enough to search, it is similar to a "CAT-T", which there are numerous online videos showing its use. The tourniquet is currently set in a large loop so it can be quickly placed and then tightened on an extremity. Instructions for the emergency trauma dressing are on its packaging, as it is a sealed item. Most everything else should be fairly self-explanatory!

Any questions, please feel free to contact me.

Dave Zern
DMZern@gmail.com

Club I.D.

Remember to display your club I.D. card on your quiver or bow case. If you don't know someone, ask them to see their card. This is a way to meet members you don't know or haven't met. This could become your next shooting or hunting partner.

Remember, this is your club, and you have a right to card someone you don't know.

NOTICE!

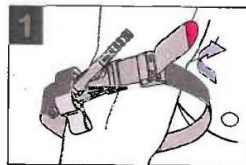
Broadhead arrows are allowed only in the sandpits!

No broadhead arrows are allowed in the indoor range.



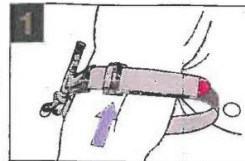
CAT COMBAT APPLICATION TOURNIQUET

INSTRUCTIONS FOR USE

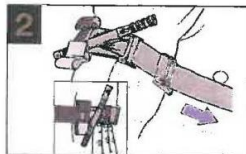


TWO-HANDED APPLICATION
Route the band around the limb, pass the red tip through the slit of the buckle, and position the **C-A-T**™ 2-3" above the bleeding site directly to the skin.*

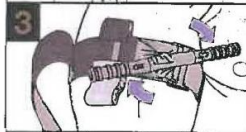
OR



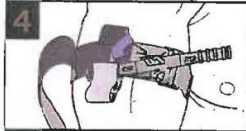
ONE-HANDED APPLICATION
Insert the injured limb through the loop in the band and position the **C-A-T**™ 2-3" above the bleeding site directly to the skin.*



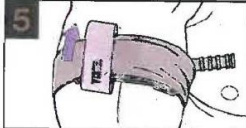
Pull band tightly and fasten it back on itself all the way around the limb, but not over the rod clips. Band should be tight enough that tips of three (3) fingers cannot be slid between the band and the limb. If the tips of three (3) fingers slide under band, retighten and re-secure.



Twist the rod until bleeding has stopped.



Secure the rod inside a clip to lock it in place. Check for bleeding and distal pulse. If bleeding is not controlled, or distal pulse is present, consider additional tightening or applying a second **C-A-T**™ above and side-by-side to the first. Reassess.



Route the band between the clips and over the rod. Secure rod and band with TIME strap. Record time of application.

*If you cannot be sure or cannot take the additional time to examine where the bleeding is coming from based on the situation, the **C-A-T**™ can be effectively applied over clothing as high on the arm or leg as possible. The **C-A-T**™ must NOT be applied over solid objects within the clothing. As soon as the situation permits, the injured limb should be evaluated and the **C-A-T**™ re-positioned 2-3" above the injury directly to the skin.

Kishwaukee Archers, P.O. Box
495, Sycamore, IL. 60178
www.kishwaukeearchers.org
Clubhouse phone:
815.899.6699

Reminder: No smoking inside the club house and indoor range. This includes E-cigs and Vaping.

Introduction

Grab your gear and come out to the club for some practice to insure you are ready for your next shot of the lifetime.

Share your sport and invite a new shooter or experienced shooter to accompany you.

Do you remember who introduced you to the sport of archery? Maybe you could be that person for your new shooting partner.

Club Meetings

The Meetings are held the first Thursday of the month 7pm, at the club house.

Club logo Decals, Hats, and T-shirts

Clayton will be running our club merchandise.
Questions email cpconn11@gmail.com or on his cell at 847-264-0615.

The size charts and colors are presented on pages 2-4 in the order form. Order forms will be at the club and at the bottom of this newsletter. **They can be turned into any board member or left at the club in the White drop-box.**

Chance for work Hours

Please log any work hours on the clipboard, inside the club house, so we can keep your work hours up to date. It's your responsibility to get approval from a board member prior to performing the work and to write your hours down. All members with **working memberships must have their hours completed between January 1st and December 31st of each calendar year.**

- Fireplace Chimney needs brick work.
- 3d setup and kitchen help needed for upcoming shoots.
Contact Tony or Josh for more info.
- Before doing work, contact any board member or the range captains:

Range Captain – Randy Rutledge – (630) 308-1752 - zonearrow@gmail.com

Range Captain – John kufer – (630) 346-7246 jkufer@sbcglobal.net

Kitchen chair - Tony Skiroock (847)-343-3336 anthonyskiroock@gmail.com

3D chair – Josh Lepage (630)-404-9499 jocelepage@gmail.com

Classifieds

Got something for sale? Feature it in this space. Provide a brief description, a price, and your contact information.

Mathew's 30" Hallon, 6", 28" draw and 50 to 60 lbs.

Black Gold 5 pin site

Mathew's stabilizer

Bow String, First String (less than 100 arrows)

Fuse Quiver

\$500

Phil Thomas

847-612-8976

pjhunts4877@yahoo.com



Old Business / New Business / Meeting notes.

Old Business:

- Denny investigated replacing the club house door lock. Estimate about \$1200
- Need Tree by neighbor cut. Jake will cut it down.
- Got donations for new stove and new paint in kitchen. Looks Great!
- November is nominations.
- Tentative dates for shoots were presented. Will be finalized in November

New Business:

- Josh and Ron will confirm at clubs meeting in Wisconsin next Thursday will finish looking into ASA and other ideas for club shoots and fund raiser.
- Matt looking into possible shoots
- Denny is checking out Frontier for poor service and Wi-Fi as well as metro net
- Jake checking out phone deal for 111.00 per month for service and Wi-Fi
- the entire board of directors was nominated for next year, no other nominations for any position. Remember - the vote for board members is at the December meeting

Pictures!!

(Send in a picture of your buck or doe you shot this year, or any year and we'll put it in the newsletter! Tell us about the deer; where you shot it; how it scored; etc. You can also send in other archery related pictures as well.)

Congrats Kyle!!

From Kyle: I took my biggest doe by far on October 24th in central Wisconsin. Got her with my Matthews Triax from a saddle at 25 yards. She weighed 166 pounds!



League nights:

Leagues will be starting up soon. Keep a look out in the newsletter for updates.

- Tuesday JOAD
- Jan 20-21 Jan 14th Illinois shoot
- Feb 25-26 Dec 18th intro to indoor shoots class
- Mar 25-26
- Apr 29-30
- Jun 10-11
- Jul 15-16

INTRODUCTION TO INDOOR ARCHERY

SUNDAY DECEMBER 18th

KISHWAUKEE ARCHERS

Illinois archery association

National field archery association

Field archery of Illinois

World archery

Usarchery

Illinois target archery association

What they cost to join and what is the differences between

EXPLANATION ON ALL THE DIFFERENT INDOOR TARGETS HOW THEY ARE SHOT AND SCORED

SHOOT A 30 ARROW FUN ROUND

LUNCH BREAK WITH CHILI AND ALL THE FIXINGS

FINISH THE DAY WITH A BRACKET head to head SHOOT DOWN
ROUND BRING YOU BOW FOR THE FUN AND PICK UP SOME
SHOOTING ADVICE ON HOW TO IMPROVE YOUR INDOOR SCORES

START TIME 12 Noon Email me at zonearrow@gmail.com

KISHWAUKEE ARCHERS ORDER FORM

Name _____

Address _____

Phone _____ E-mail _____



Adult Gildan Softstyle Short-Sleeve T-Shirt \$15

1 color, 2 side screen print

Cactus, Red Mist, Navy Mist, Pitch Black Mist

Youth Gildan Heavy Cotton T-Shirt \$15

Military Green, Heather Red

Adult Jerzees Long Sleeve T-Shirt \$26

1 color, 2 side screen print

Vintage Heather Red, Vintage Heather Navy, Dark Heather

Adult C2 Sport Long Sleeve Dri-fit T-Shirt \$28

Graphite, Black: 1 color, 2 side screen print

White: Full color logo front/back

Adult/Youth Jerzees Hoodies \$36

1 color, 2 side screen print

Black Heather, Vintage Heather Red

Visit ssactivewear.com for product sizing chart & colors



Core 365 Jacket - \$50

Embroider full color front logo only, left chest

Heather Charcoal

Visit alphabroder.com for jacket sizes



Golf Towel \$12

Dye-sublimated print, full color



New Era Adult/Youth Stretch Fit Ball Cap \$36

Embroider full color front logo only

Black

Visit sanmar.com for cap sizes



Sportsman Ball Cap \$30

Hook & loop adjustable enclosure

One size fits all

Embroider full color front logo only

Black/Red

ITEM	PRICE*	SIZE AND QUANTITY										TOTAL
		YS	YM	YL	S	M	L	XL	*2X	*3X		
A: Short-Sleeve T-Shirt	\$15											
B: Long-Sleeve T-Shirt	\$26	N/A	N/A	N/A								
C: Long-Sleeve Dri-Fit T-Shirt	\$28	N/A	N/A	N/A								
D: Hoodies	\$36											
E: Jacket	\$50	N/A	N/A									
F: New Era Stretch Fit Ball Cap	\$36	Y	A									
G: Sportsman Ball Cap	\$30											
H: Golf Towel	\$12											
I: Window Decal	\$12											
*Additional Cost for 2XL/3XL: 2XL=\$2, 3XL=\$3											TOTAL	

MERCHANDISE COLOR/SIZE CHARTS

Adult T-Shirt Colors

Cactus



Red Mist



Navy Mist



Pitch Black Mist



Size Chart

	XS	S	M	L	XL	2XL	3XL	4XL
Body Length	27	28	29	30	31	32	33	34
Body Length Tolerance	+/-1	+/-1	+/-1	+/-1	+/-1	+/-1	+/-1	+/-1
Chest Tolerance	+/-1	+/-1	+/-1	+/-1	+/-1	+/-1	+/-1	+/-1
Chest Width (Laid Flat)	16	18	20	22	24	26	28	30

Youth T-Shirt Colors

Military Green



Heather Red



Size Chart

	XS	S	M	L	XL
Body Length	20 1/2	22	23 1/2	25	26 1/2
Body Length Tolerance	+/-1	+/-1	+/-1	+/-1	+/-1
Chest Tolerance	+/-1	+/-1	+/-1	+/-1	+/-1
Chest Width (Laid Flat)	16	17	18	19	20
Sizes (US)	6-8	10-12	14-16	18-20	22-24

Adult Jerzees Long Sleeve T-Shirt Colors

Vintage Heather Red



Vintage Heather Navy



Dark Heather



Size Chart

	S	M	L	XL	2XL	3XL
Body Length	28	29	30	31	32	33
Chest Width (Laid Flat)	18	20	22	24	26	28
Sleeve Length (From Center Back)	34	35	36 1/2	37 1/2	38 1/2	39 1/2

Adult C2 Sport Long Sleeve Dri-fit T-Shirt Colors

Graphite



White



Size Chart

	S	M	L	XL	2XL	3XL
Body Length	27 1/2	28 1/2	29 1/2	30 1/2	31 1/2	32 1/2
Chest Width (Laid Flat)	18	20	22	24	26	28
Sleeve Length	23 1/2	24	24 1/2	25	25 1/2	26

Adult Jerzees Hoodies Colors

Black Heather



Vintage Heather Red



Adult Size Chart

	S	M	L	XL	2XL	3XL	4XL	5XL
Body Length	27	28	29	30	31	32	33	34
Chest Width (Laid Flat)	20	22	24	26	28	30	32	34
Sleeve Length	34 1/2	35 1/2	36 1/2	37 1/2	38 1/2	39	39 1/2	40

Youth Size Chart

	S	M	L	XL
Body Length	19 1/2	22 1/2	25 1/2	27 1/2
Chest Width (Laid Flat)	15	17	19	20
Sleeve Length (From Center Back)	25	28	31	34

Core 365 Fleece Jacket Size Chart

	S	M	L	XL	2XL	3XL	4XL	5XL
BODY WIDTH	21.5	23	24.5	26.5	28.5	30.5	32.5	34.5
FULL BODY LENGTH	26.75	27.98	28.6	29.13	29.75	30.38	31	31.63
SLEEVE LENGTH	34	35	36	37	38	39	39.75	40.5

Size Chart

	S	M	L	XL	2XL	3XL	4XL	5XL
CHEST	35-38	39-41	42-45	46-49	50-52	53-56	57-60	61-64

Adult Cap Size Chart

SIZE CHART

	SM	ML	LXL
Hat Size	7 1/8-7 3/8	7 3/8-7 5/8	7 5/8-7 7/8

Youth Cap Size Chart

SIZE CHART

	TY	CY
Hat Size	6-6 3/16	6 1/2-6 3/4